

SPONSORED PROJECT
HARCOURT PROJECT

EAST



MEETS WEST

The essence of Queensland living and the beauty of Indonesian culture
come together in this unique project

WORDS KARSHA GREEN **PHOTOGRAPHY** SHOOT TO SELL PHOTOGRAPHY
AND UNVEIL FILMS AND PHOTOGRAPHY



The key design feature of the Harcourt Project was carefully blending two cultures – the Australian aesthetic and locale with influences and statements that acknowledged and celebrated the clients' memories of living in Indonesia

DETAILS

HOUSE Harcourt Project
LOCATION New Farm, Queensland
DATE COMMENCED May 2019
DATE COMPLETED December 2019

SPONSORED PROJECT
HARCOURT PROJECT

WE LOVE

THE MATERIAL PALETTE OF REDDISH-BROWN TIMBERS PAIRED WITH GREY AND BLACK TONES





The kitchen is a true chef's kitchen with all the equipment necessary for the homeowners to create their favourite Asian dishes

A professional couple living in Jakarta with their daughter owned a block of land in the heart of New Farm, a trendy suburb in Brisbane, Queensland. The site had become run down and decrepit, so in a collaboration between O'Shea & Sons Builders, Merge Interior Design and Jazz Designs, a welcoming and functional space was created that brought together the essence of Queensland living with the clients' love of Indonesian culture.

"The clients were living in Jakarta at the time with plans to move to Brisbane, bringing with them a number of Asian-inspired furniture pieces. We selected a relatively monochromatic scheme with pops of reddish-brown timber to tone in with his existing furniture," says interior designer Joanna Kane of Merge Interior Design.

The key design feature of the Harcourt Project was carefully blending two cultures: the Australian aesthetic and locale with influences and statements that acknowledged and celebrated the family's memories of living in Indonesia. To do this, the physical space was built around bringing in natural light and airflow from the outdoors, creating space and capturing the spirit of Queensland living. A variety of external cladding and screenings interacted in many ways. They came in varying shapes and sizes, textures, colours and finishes. As an example, the James Hardie cladding demonstrated the yin and yang when the Axion applied in



SPONSORED PROJECT

HARCOURT PROJECT



EDITOR'S FAVOURITE

THE OUTDOOR BARBECUE AREA WITH WEAVE-STYLE FEATURE CLADDING, HERRINGBONE BRICK-LOOK FLOORING, SIX-BURNER BARBECUE AND WOOD-FIRE PIZZA OVEN

PROJECT TEAM

BUILDER O'Shea & Sons Builders

BUILDING DESIGNER Jazz Designs

INTERIOR DESIGNER Merge Interior Design

CABINET AND JOINERY AllFit Cabinet Solutions

STRUCTURAL TEAM

Soil tests and geotechnical services East Coast Geotechnical

Structural services ACOR Consultants

Building certifiers Building Approval & Advice

House energy assessment House of Stars

FIXTURES & FITTINGS

Wood and heating specialist Mr Stoves

Bathroom fixtures and fittings Fianza, Abey Australia, Tradelink

Appliances Harvey Norman Commercial

Benchtops Caesarstone

Entry feature wall Austral Bricks

Tiles and flooring National Tiles, Awesome

Timber Flooring, Cavalier Bremworth

Aluminium cladding, screens, fencing, awning system Knotwood, Heka Hoods, Aaromat Group

External cladding James Hardie

FURNITURE & FURNISHINGS

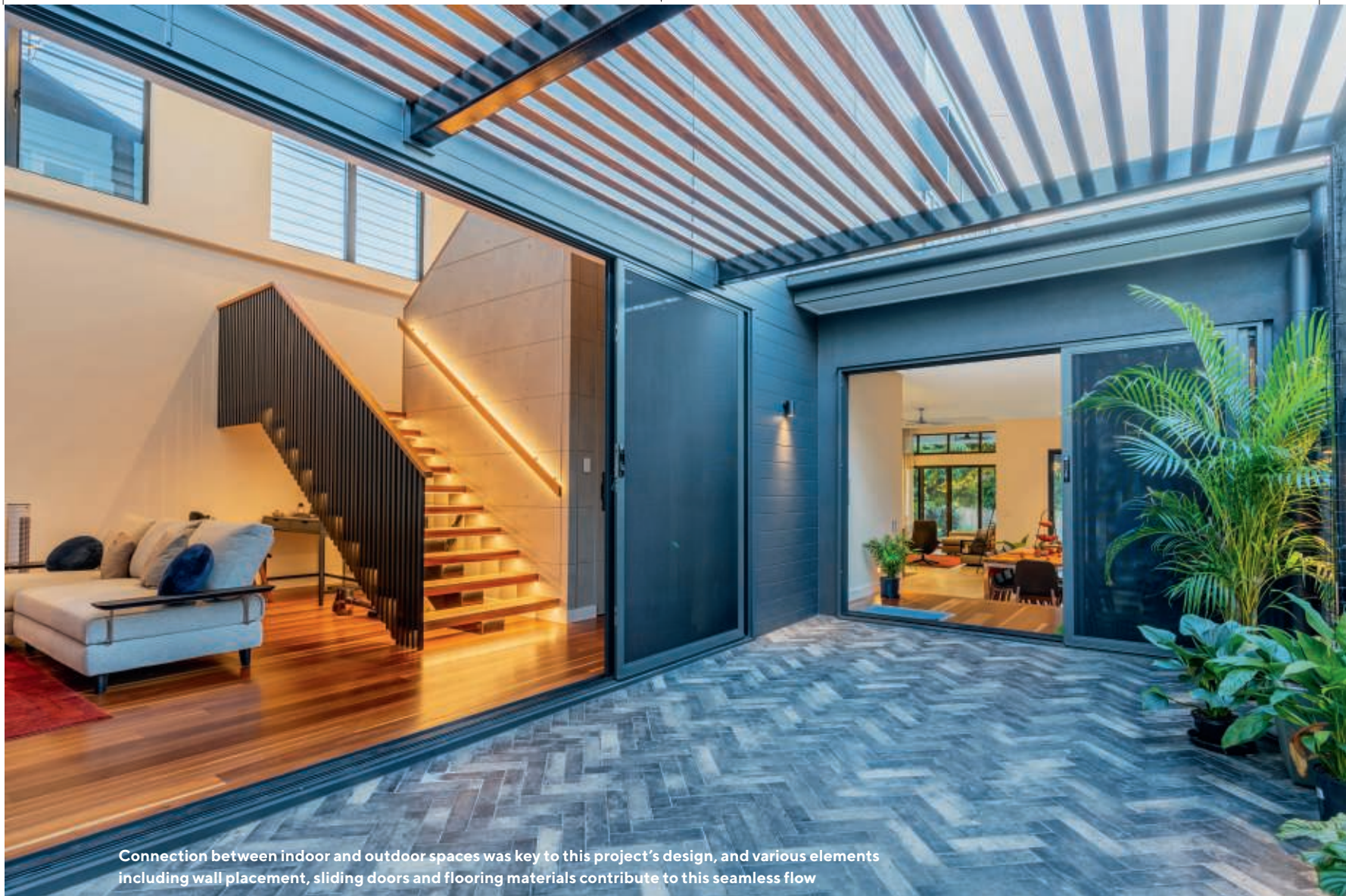
Curtains and blinds CBI Creative

Art installation Picture Hanging Systems

horizontal linear pattern directly interacted with the Hardiflex with its featured timber batten overlays. The colour and material palette of the home embraced Indonesia's rich earthy culture and included rustic blends of brick and warm timbers with natural, earthy greys and blacks.

"As you walk through this home, from the front door to the back, it's as if it just keeps opening up, connecting with the neighbourhood, connecting with the backyard ... the way you're carried through the home is amazing," says Nick O'Shea from O'Shea & Sons Builders.

Connection between indoor and outdoor spaces was key to this project's design, and various elements such as wall placement, sliding doors and flooring materials contribute to this seamless flow. Wide stair treads are another example of creating an overall feel of spaciousness, peace and wellbeing – all highlighted in the client's brief for his relocated family. osheabuilders.com.au



Connection between indoor and outdoor spaces was key to this project's design, and various elements including wall placement, sliding doors and flooring materials contribute to this seamless flow

